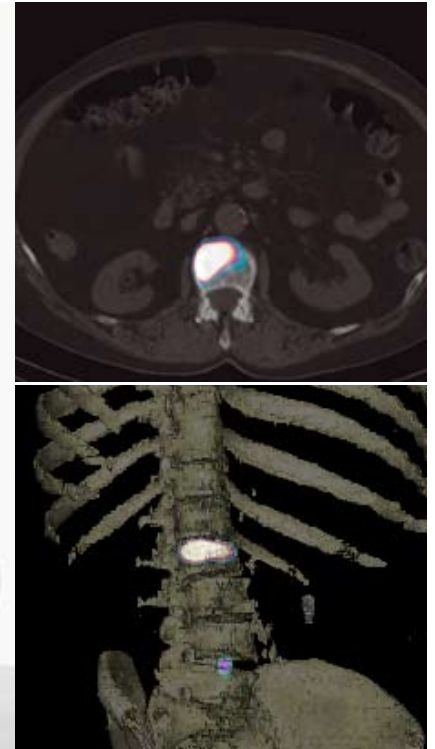


Clinical Imaging & Research Centre



Images courtesy of Siemens Healthcare.

Nuclear Medicine

The Wellington Hospital Nuclear Medicine service, set up in collaboration with the British Cardiac Research Trust, and housing the first hybrid SPECT-CT facility in the UK private sector, is now available at the Wellington Hospital Clinical Imaging and Research Centre in the South Building.

Nuclear medicine/ isotope scans

A wide range of nuclear medicine/isotope scans are performed in the Centre. These include bone scans, renal scans, liver, myocardial perfusion scans, white cell tumour receptor scans and virtually those of any organ system utilising isotope techniques to provide vital information about blood supply and organ function.

This Nuclear Medicine service however has a new dimension to it. Instead of an ordinary/routine gamma camera for isotope scanning, this facility houses a state-of-the-art Hybrid scanner (*Siemens Symbia-6*) that incorporates both isotope technology (gamma cameras with SPECT/3D capability) and multi-slice CT scan technology on the same platform. It can therefore combine

functional information from the isotope scan with structural information from the CT scan providing composite images with superior diagnostic capabilities.

This service is led by a highly experienced team of Radiologists, Cardiologists and Nuclear Medicine Physicians, supported by senior Technologists and Clinical Physicists who will provide the highest quality of care.

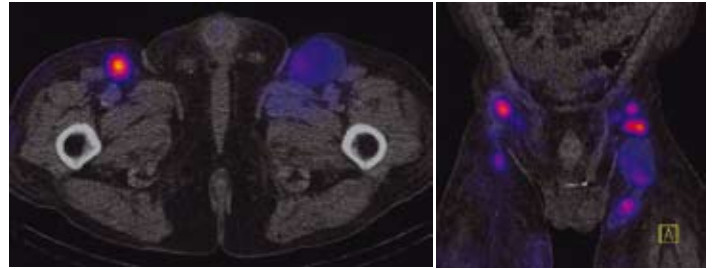
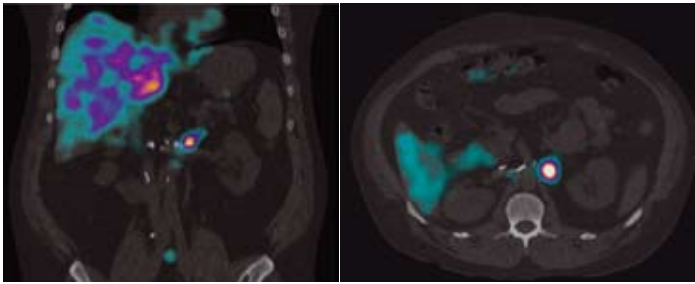


Key Clinical Benefits of Hybrid Technology / SPECT-CT Scans

Immediately after the isotope scan, depending on the clinical requirement, limited CT slices can be acquired in the same position allowing for perfect overlay of functional and anatomical information. This hybrid SPECT-CT scan can localise problem areas with greater accuracy, improving diagnostic confidence and diagnostic specificity, potentially reducing the need for multiple tests.

Among the ever expanding list, the key clinical areas to benefit from SPECT-CT are:

- **Bone/Orthopaedic Imaging:** Lower back pain-facet joint assessment / Joint Prosthesis assessment / Bone and Joint infections / Occult fractures etc)
- **Vascular Imaging:** Aortic /vascular graft infection assessment using white cell scans
- **Tumour Imaging:** bone metastases / Tumour receptor imaging with MIBG and Octreotide Scans/ Thyroid cancer
- **Parathyroid localisation** and other endocrine tumours: SPECT-CT permits accurate localisation, clarity and precision.



The Team

Led by - **Dr Ranju T Dhawan** MBBS,DRM,MSc,FRCR

Consultant Radiologist & Consultant Nuclear Physician

St Mary's Hospital, Imperial College NHS Trust & the Wellington Hospital, London.

Dr Dhawan is a dual specialty accredited Nuclear Medicine Physician (1992-1997) and Cross-sectional Radiologist (1997-2002) with extensive training and experience in both specialties. A Consultant Radiologist at St Mary's Hospital (London) since 2003, her key modality interests are Nuclear Medicine, CT and Ultrasound, whilst her organ interests are Chest and Oncological Imaging.

Our experienced team of Technologists and Radiographers, is led by Ms Usha Raval : whilst the service is supported by accomplished Clinical Physicists.

If you have any questions or wish to discuss any individual patient Dr Ranju Dhawan, or any member of the team would be happy to help. We will aim to provide you with the highest calibre service and look forward to being of assistance in the management of your patients.

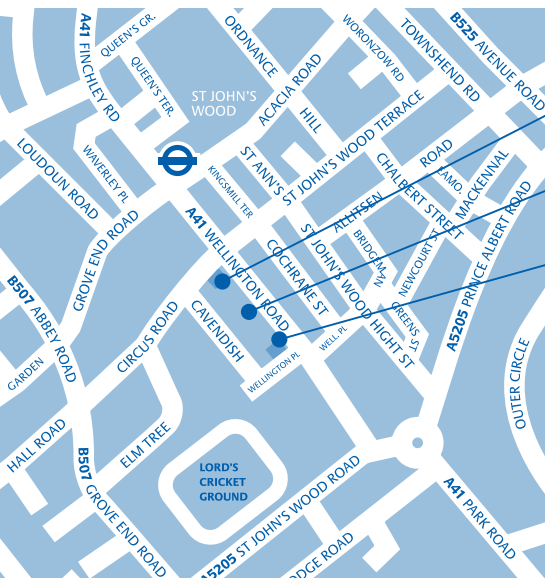
Contact Details

For appointments or more information contact Clinical Imaging & Research Centre on 020 7483 5062

Alternatively fax our department on 020 7483 5083 or email us on wellington.enquiryhelpline@hcahealthcare.co.uk

The Wellington Hospital, Wellington Place, St. John Woods London NW8 9LE

Tel 020 7586 5959 Fax 020 7586 1960
www.thewellingtonhospital.co.uk



The Wellington Hospital North

Wellington Central

The Wellington Hospital South

The Wellington Hospital
Wellington Place
St. Johns Wood
London NW8 9LE

Tel 020 7586 5959
Fax 020 7586 1960

Nearest London Underground Station

St. John's Wood on the Jubilee Line.

Parking

Limited pay & display parking is available in surrounding streets and a Masterpark Car Park is in Kingsmill Terrace.

Call 020 7722 1404 for availability and rates.

www.thewellingtonhospital.co.uk

HCA